



# THE MOSQUE INTERIOR LIGHTING DESIGN

JELLYFISH ARCHITECTURAL LIGHTING





# Welcome

This lighting design proposal focuses on providing balanced and thoughtful illumination for the main prayer area, the dining room, and the hospitality room, ensuring that each space is lit according to its functional and spiritual requirements. Carefully selected lighting fixtures are integrated to achieve the required illuminance levels, visual comfort, and uniformity, while respecting the architectural character of the mosque. The design prioritizes clarity, harmony, and efficiency, creating well-lit environments that support worship, gathering, and hospitality with consistency and precision.

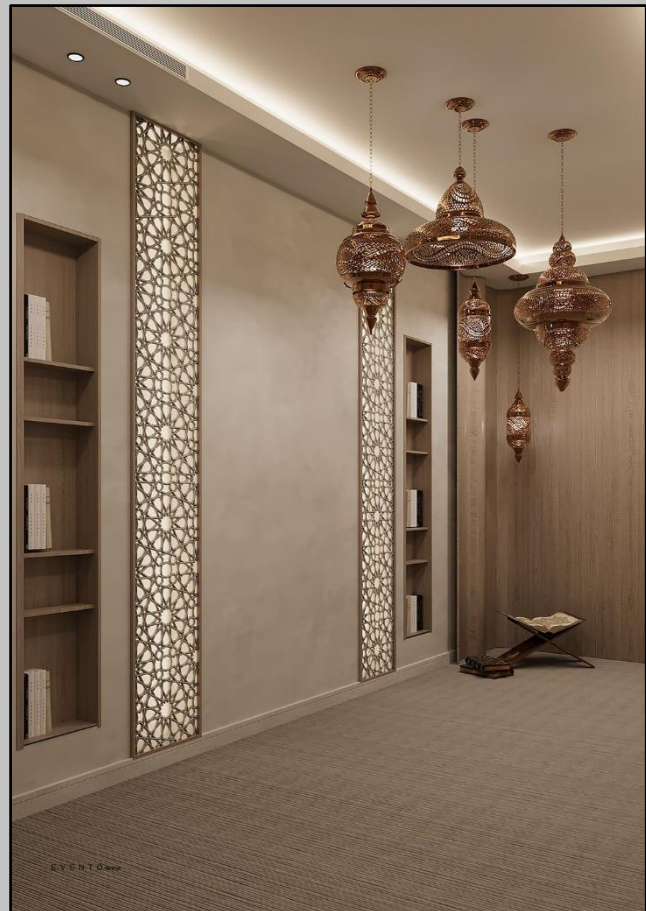
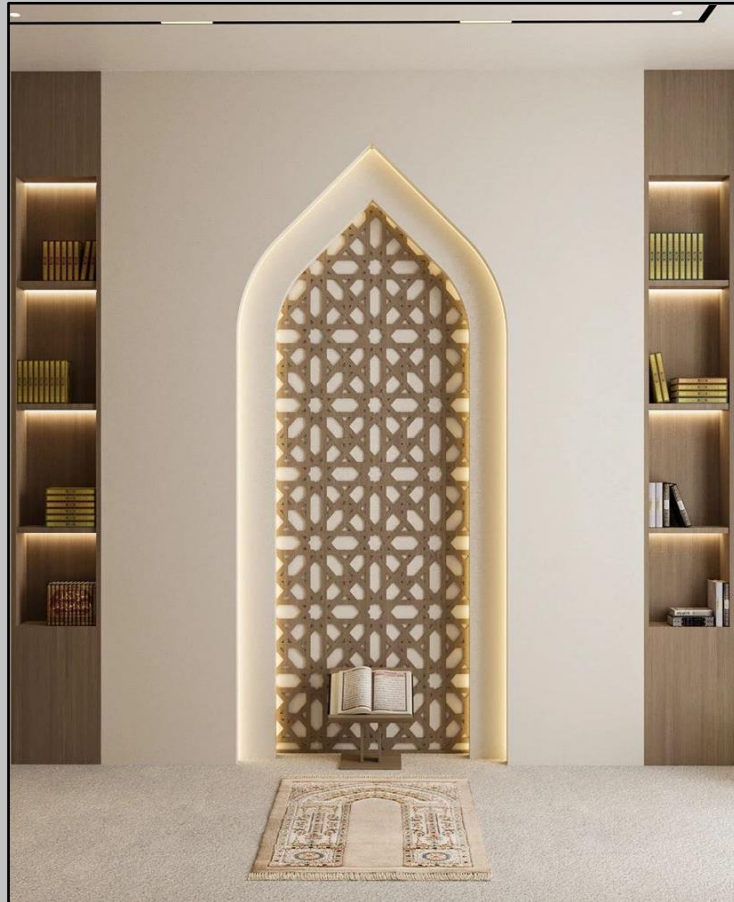
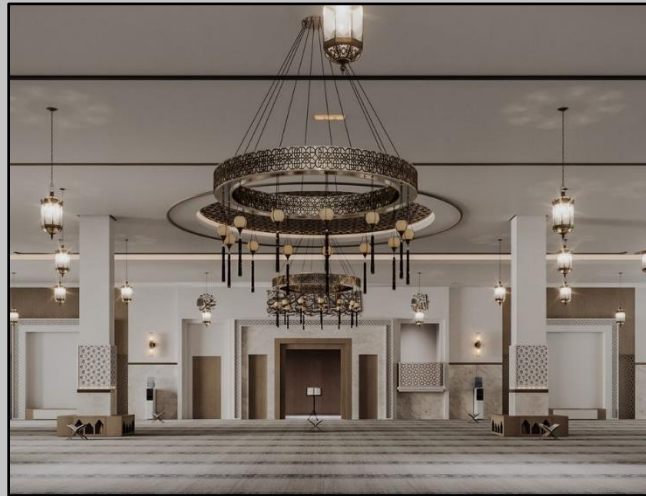




# Lighting Design Concept

The lighting concept is developed to respond to the distinct character and function of each space within the mosque. In the main prayer area, a stretch ceiling system is used to provide soft, uniform illumination that enhances visual comfort and supports a calm and contemplative atmosphere. The dining room is illuminated using a combination of downlights for general lighting and integrated LED strips to ensure adequate brightness, clarity, and functional efficiency. In the hospitality area, downlights and LED strips are complemented by decorative pendants, adding a refined visual layer while maintaining balanced illumination, creating a warm and welcoming environment for gatherings and social interaction.





The lighting design for *The Mosque* is based on creating a balanced, functional, and elegant atmosphere through a thoughtful mix of lighting layers. Each fixture type is selected to suit the character and requirements of its space, ensuring both practicality and aesthetics.

- **Recessed Downlights** – Provide soft , uniform ambient lighting.
- **Pendant lights** – Add decorative character and create visual focus points.
- **LED strips** – Create subtle accents in coves , niches, and below shelves

This combination of lighting solutions ensures that each area of the mosque is enhanced with the right mood, functionality, and character, while maintaining harmony across the entire interior design.





[About](#)

[Project](#)

[Design](#)

[Lux study](#)

[Selection](#)

# HOSPITALITY AREA





[About](#)

[Project](#)

[Design](#)

[Lux study](#)

[Selection](#)







About

Project

Design

Lux study

Selection







[About](#)

[Project](#)

[Design](#)

[Lux study](#)

[Selection](#)







[About](#)

[Project](#)

[Design](#)

[Lux study](#)

[Selection](#)







[About](#)

[Project](#)

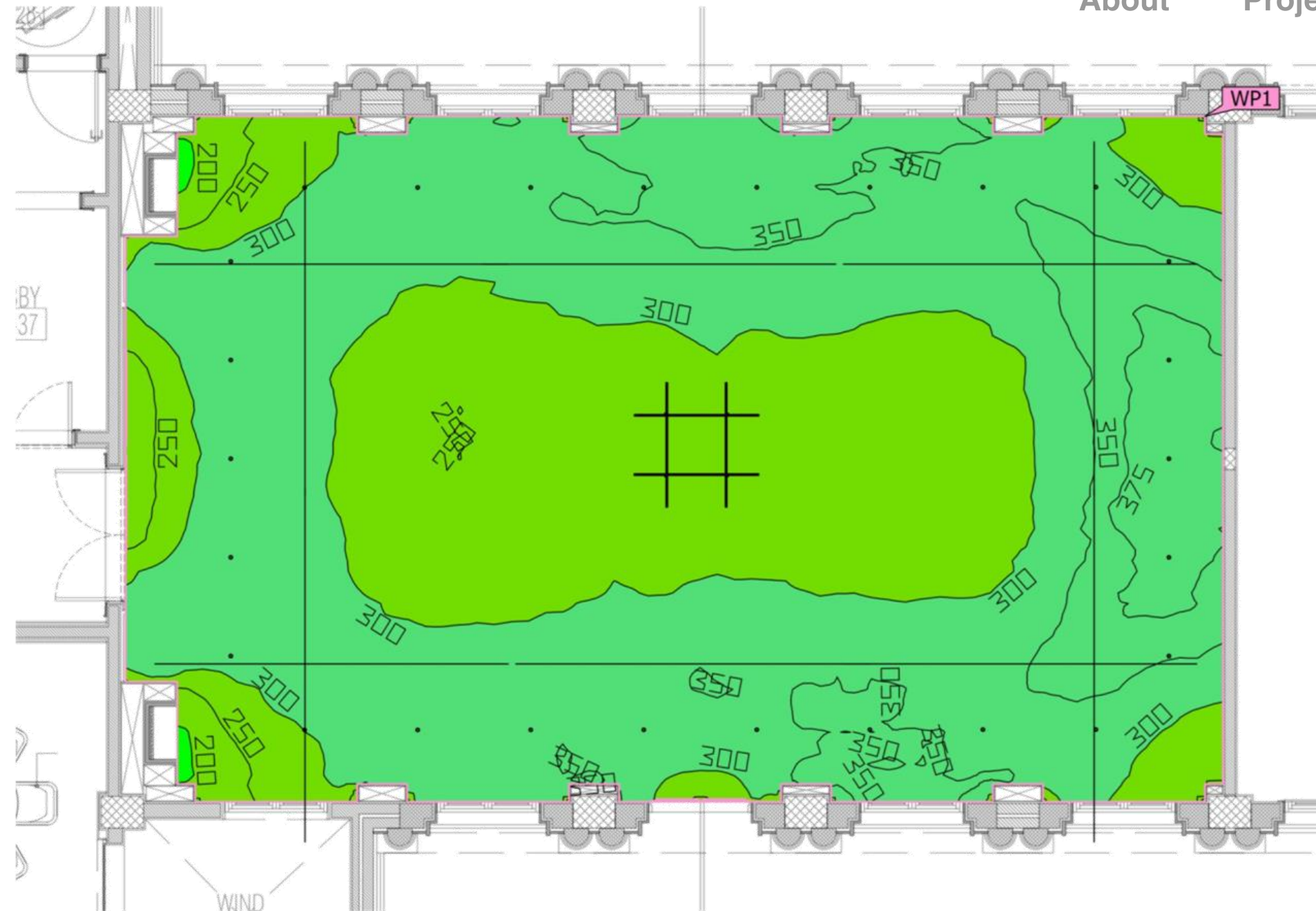
[Design](#)

[Lux study](#)

[Selection](#)







Properties	$\bar{E}$	$E_{min}$	$E_{max}$	$U_o (g_1)$	$g_2$	Index
Working plane (Hospitality) Perpendicular illuminance (adaptive) Height: 0.000 m, Wall zone: 0.000 m	315 lx	189 lx	390 lx	0.60	0.48	WP1

Hospitality Area





About

Project

Design

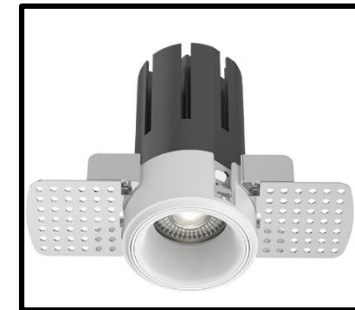
Lux study

Selection



### LED Strip

Lumen Output : 490 lm/m  
CCT : 3000K  
IP : 20



### Downlight

Lumen Output : 850 lm  
CCT : 3000K  
IP : 65



### Decorative Pendant

Lumen Output : 10230 lm  
CCT : 2700K  
IP : 20





[About](#)

[Project](#)

[Design](#)

[Lux study](#)

[Selection](#)

# | Main Prayer Area





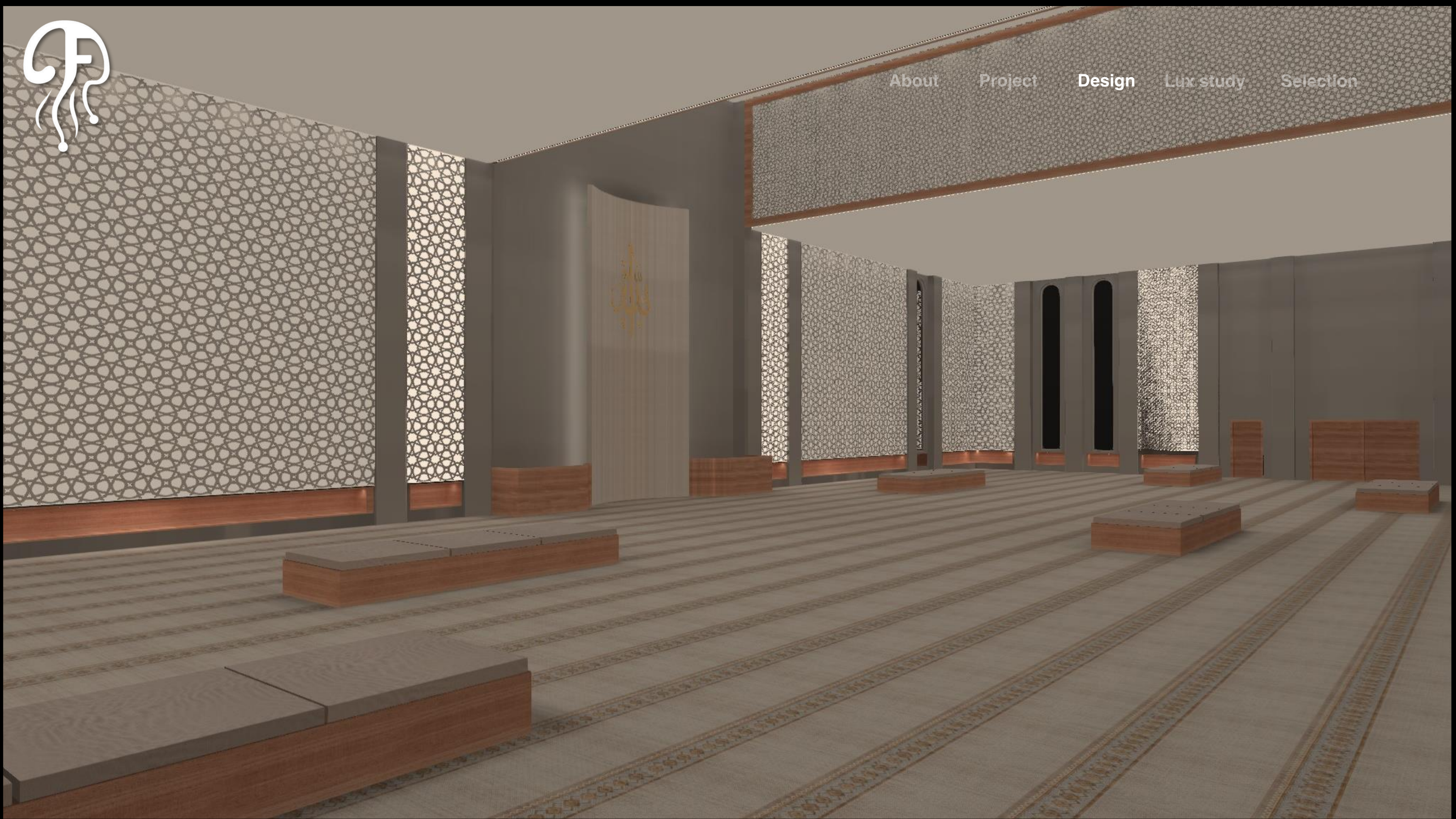
[About](#)

[Project](#)

[Design](#)

[Lux study](#)

[Selection](#)







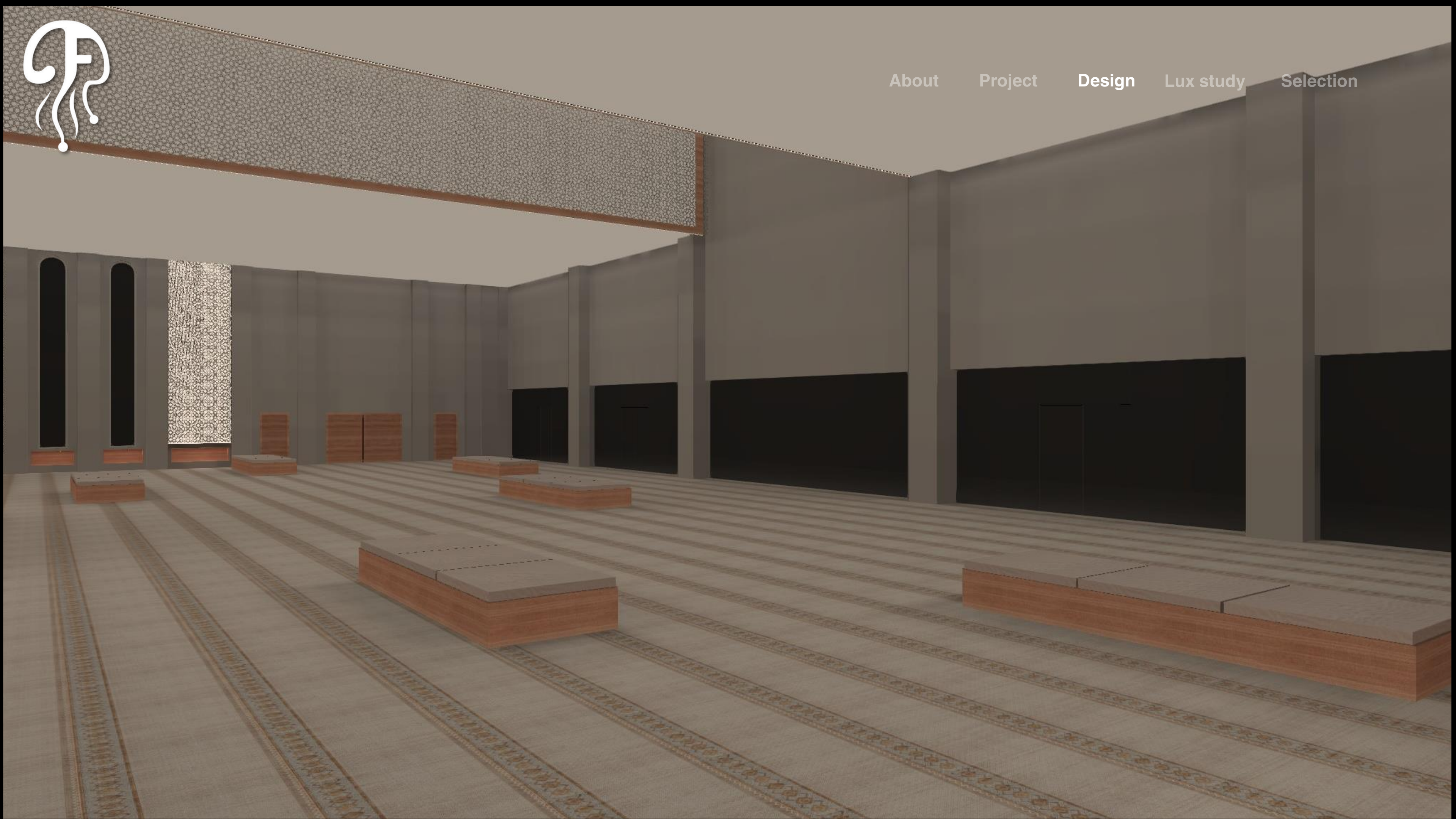
[About](#)

[Project](#)

[Design](#)

[Lux study](#)

[Selection](#)







About

Project

Design

Lux study

Selection







About

Project

Design

Lux study

Selection







[About](#)

[Project](#)

[Design](#)

[Lux study](#)

[Selection](#)







About

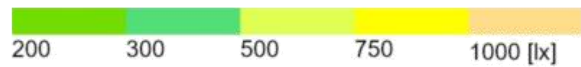
Project

Design

Lux study

Selection





Properties	$\bar{E}$	$E_{min}$	$E_{max}$	$U_o (g_1)$	$g_2$	Index
Calculation surface 1 Perpendicular illuminance Height: 0.100 m	466 lx	234 lx	819 lx	0.50	0.29	CG1

# Main Prayer Area





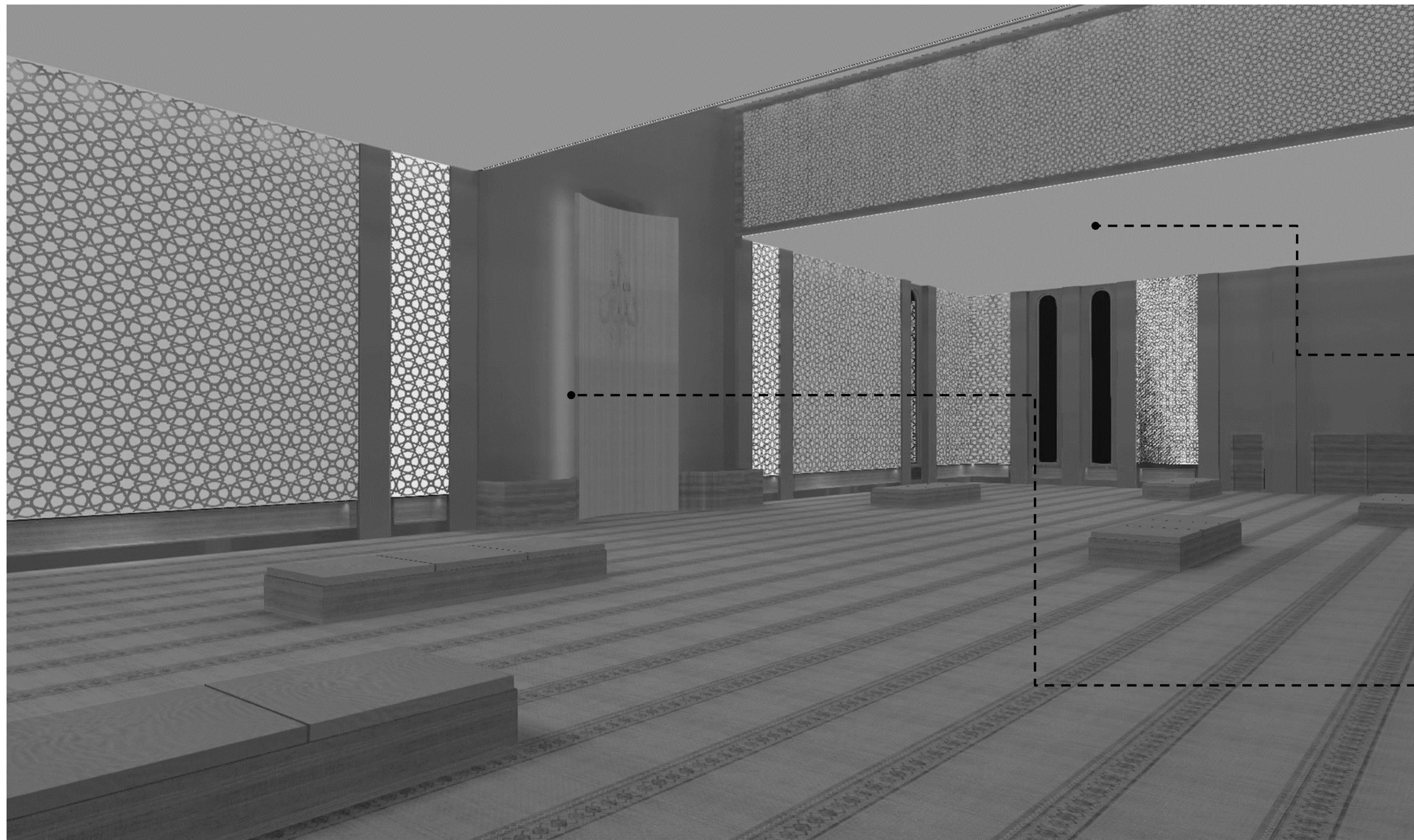
About

Project

Design

Lux study

Selection



### Stretch Ceiling

CCT : 3000K  
IP : 20



### LED Strip

Lumen Output : 490 lm/m  
CCT : 3000K  
IP : 20





[About](#)

[Project](#)

[Design](#)

[Lux study](#)

[Selection](#)

# DINING AREA





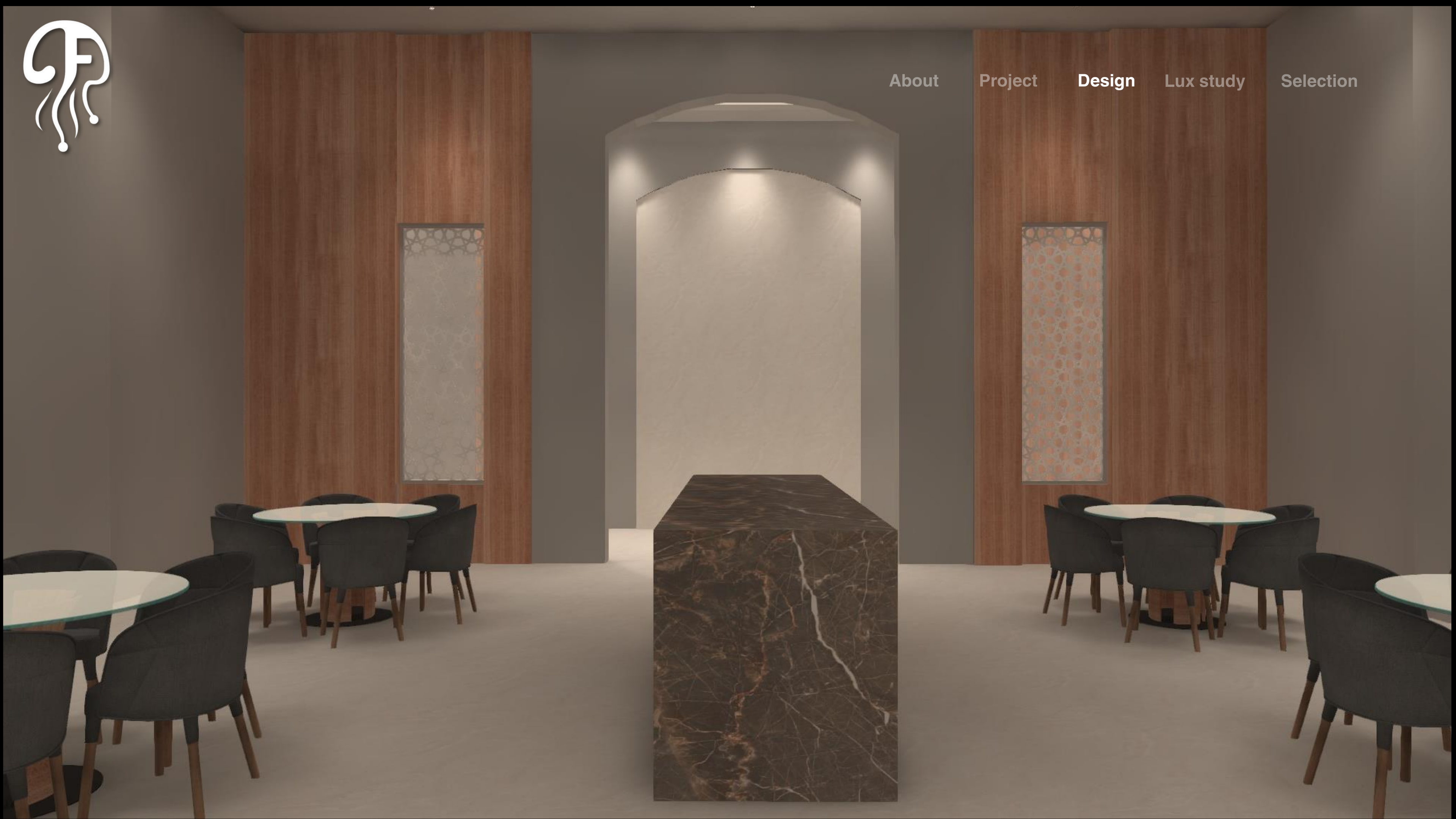
About

Project

Design

Lux study

Selection







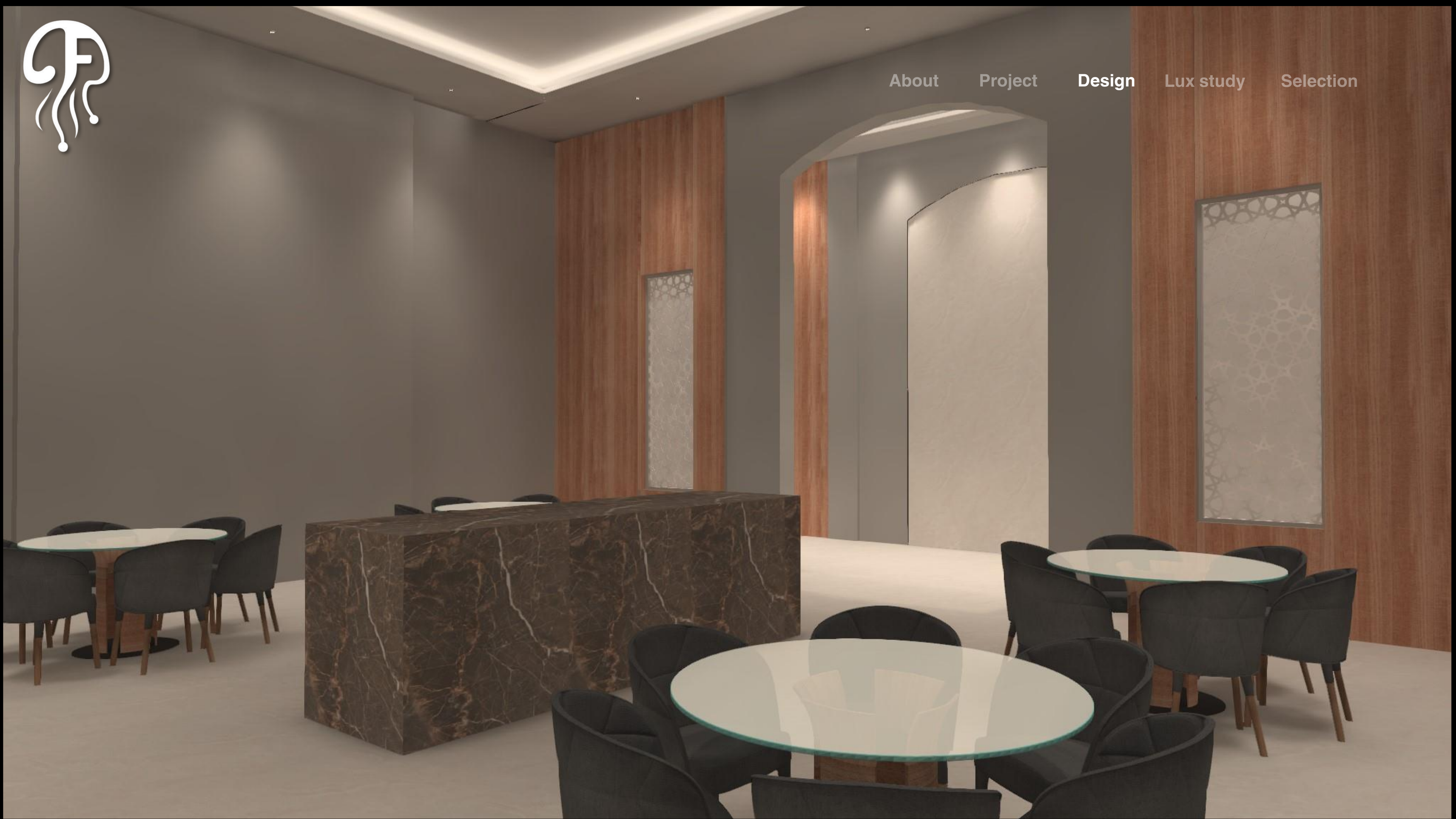
[About](#)

[Project](#)

[Design](#)

[Lux study](#)

[Selection](#)







About

Project

Design

Lux study

Selection







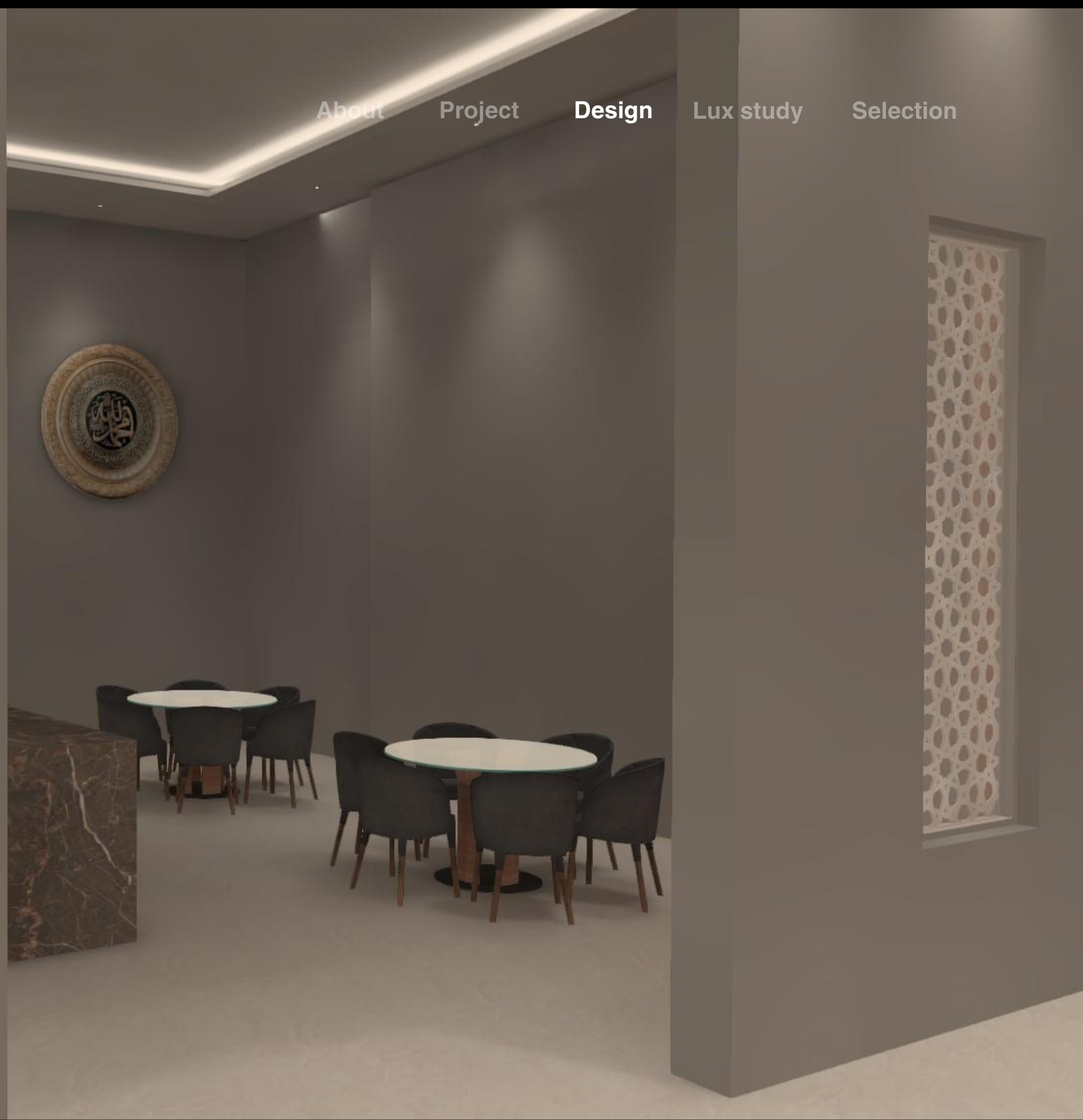
[About](#)

[Project](#)

[Design](#)

[Lux study](#)

[Selection](#)







[About](#)

[Project](#)

[Design](#)

[Lux study](#)

[Selection](#)







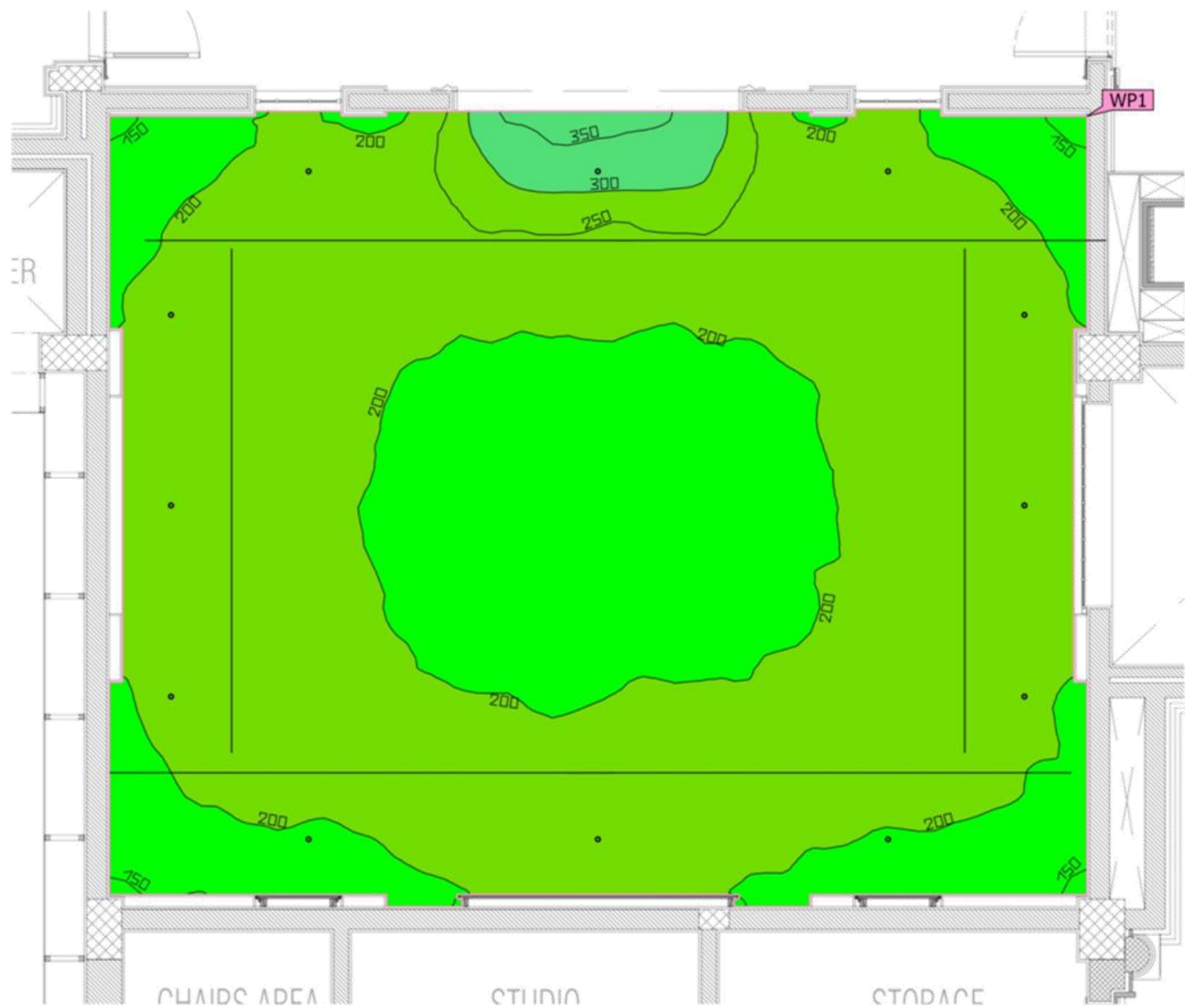
About

Project

Design

Lux study

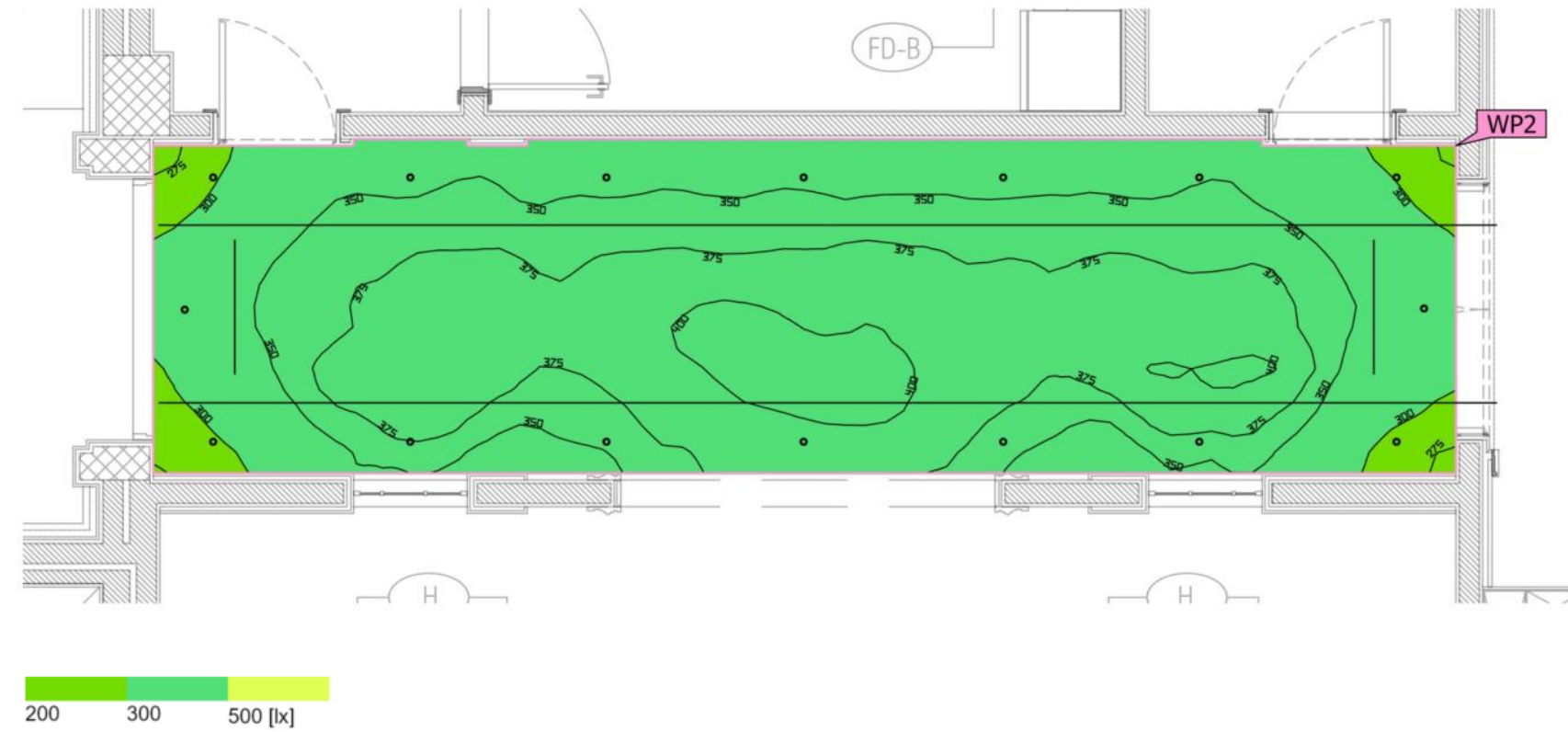
Selection



Properties	$\bar{E}$	$E_{min}$	$E_{max}$	$U_o(g_1)$	$g_2$	Index
Working plane (Dining Room) Perpendicular illuminance (adaptive) Height: 0.000 m, Wall zone: 0.000 m	212 lx	132 lx	365 lx	0.62	0.36	WP1

Dining Area





Properties	$\bar{E}$	$E_{min}$	$E_{max}$	$U_o (g_1)$	$g_2$	Index
Working plane (Dining Room Corridor) Perpendicular illuminance (adaptive) Height: 0.000 m, Wall zone: 0.000 m	359 lx	270 lx	409 lx	0.75	0.66	WP2





About

Project

Design

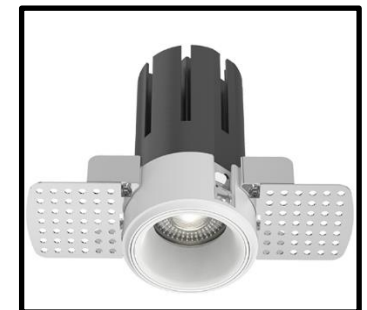
Lux study

Selection



### LED Strip

Lumen Output : 490 lm/m  
CCT : 3000K  
IP : 20



### Downlight

Lumen Output : 850 lm  
CCT : 3000K  
IP : 65





# Thank You

 +966 56831 3692

 [Home - Jellyfish Lighting](#)